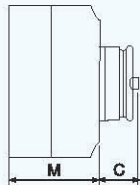
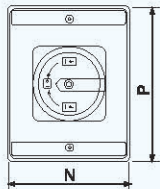


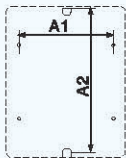
GLD12系列密封型电源切断开关

主要技术参数

表面安装



开孔尺寸



型号规格	外形尺寸(mm)				安装尺寸(mm)	
	P	N	M	C	A1	A2
GLD12-16	100	80	65	35	60	90
GLD12-20	100	80	65	35	60	90
GLD12-25	125	100	85	35	60	115
GLD12-32	125	100	85	35	60	115
GLD12-40	175	114	100	35	60	165
GLD12-63	175	114	100	35	60	165
GLD12-100	240	160	120	45	142	193

